

Zizzi Restaurant Friars Walk, Newport

Boatman
Mechanical Services
Limited

We had the opportunity of working within an exciting new development situated in the heart of Newport town centre consisting of over 20 restaurants.

Zizzi restaurant serves authentic Italian dishes from pizza, pasta and risotto to salad dishes.

Boatman mechanical services had the task to design, install and project manage the mechanical services to meet with the local planning authority whilst adhering to the strict compliance of DW 172 for kitchen and ventilation systems.



The mechanical services consisted of:-

Kitchen Extract System incorporating UV, Odour Control and a Fire Suppression System.

The ductwork installed was in excess of 100 linear meters from the kitchen to the external plant-area positioned at the highest point of the building. This in itself offered a challenging task avoiding clashes with existing services whilst maintaining clearance at every 1.5 meters for future cleaning access and maintenance.

All kitchen extract ductwork was required to be fire rated to meet compliance with FS 1286/01 achieving integrity up to two hours during fire conditions.

Case Studies

Unit 10A
Abbey Trading Estate
Bell Green Lane
London SE26 5TW
Tel: 0208 778 8877
Fax: 0208 659 5687

Email: info@boatmanmechanical.co.uk
Website: www.boatmanmechanical.co.uk

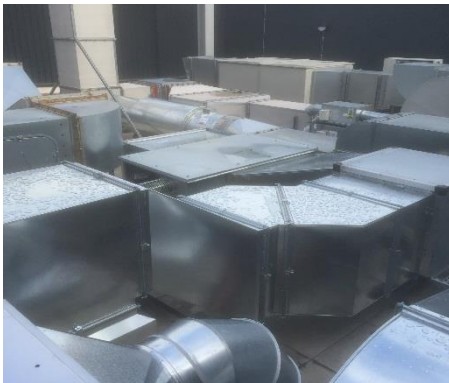


Climate Control

Daikin VRV system was utilised to overcome the extensive 100 metre plus pipe runs while offering energy recovery and efficiency.

Attenuation

Purpose made attenuation was incorporated into the ventilation system to mitigate noise generation and achieve the guidelines set out within the planning document



External Plant Area



Kitchen Extract Discharge

Case Studies

For any further enquiries please contact the office at info@boatmanmechanical.co.uk

Unit 10A
Abbey Trading Estate
Bell Green Lane
London SE26 5TW
Tel: 0208 778 8877
Fax: 0208 659 5687
Email: info@boatmanmechanical.co.uk
Website: www.boatmanmechanical.co.uk

